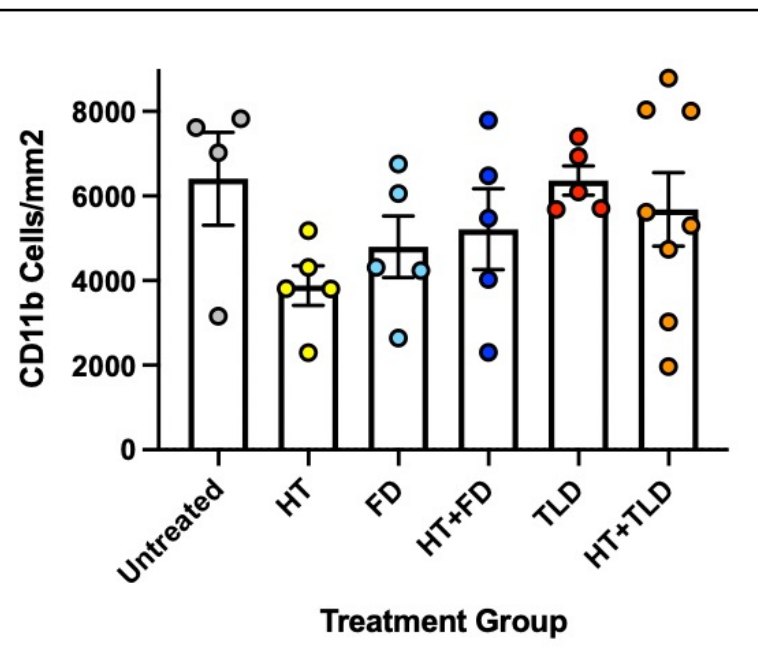
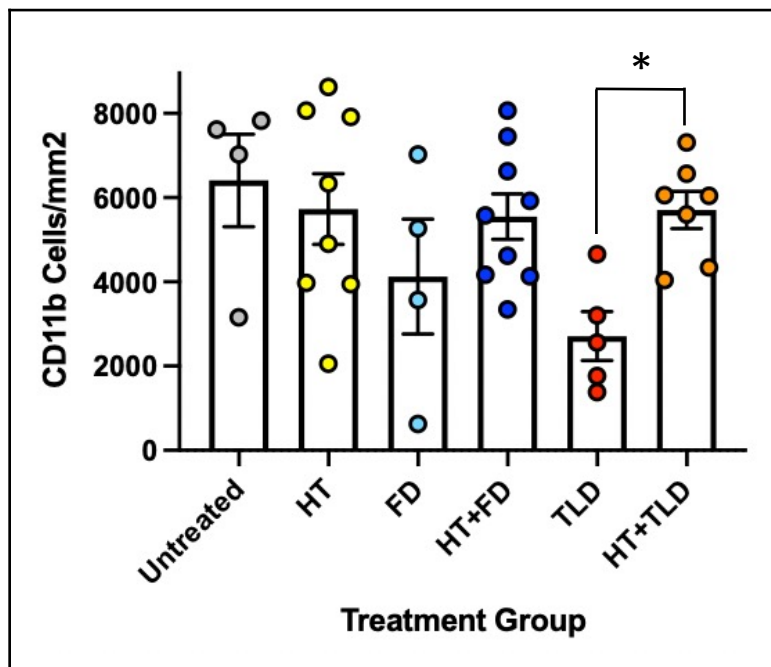


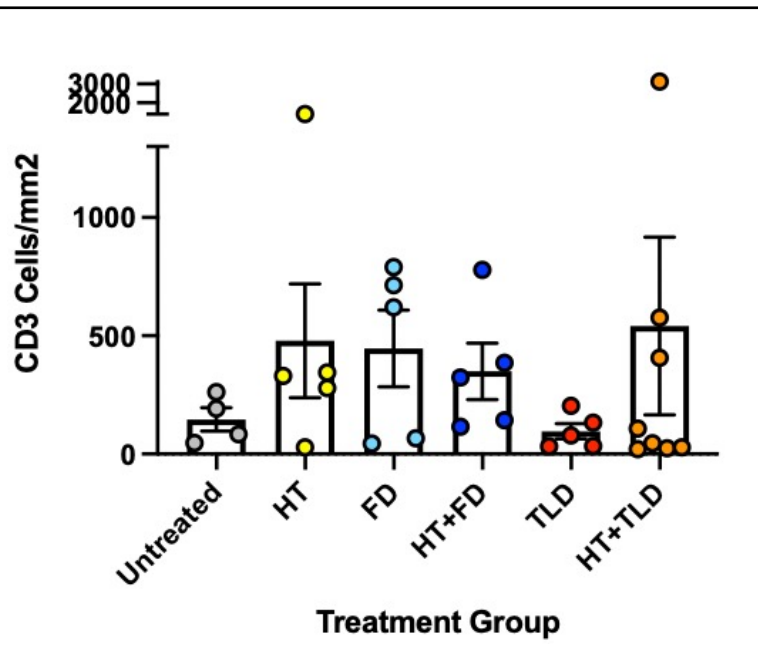
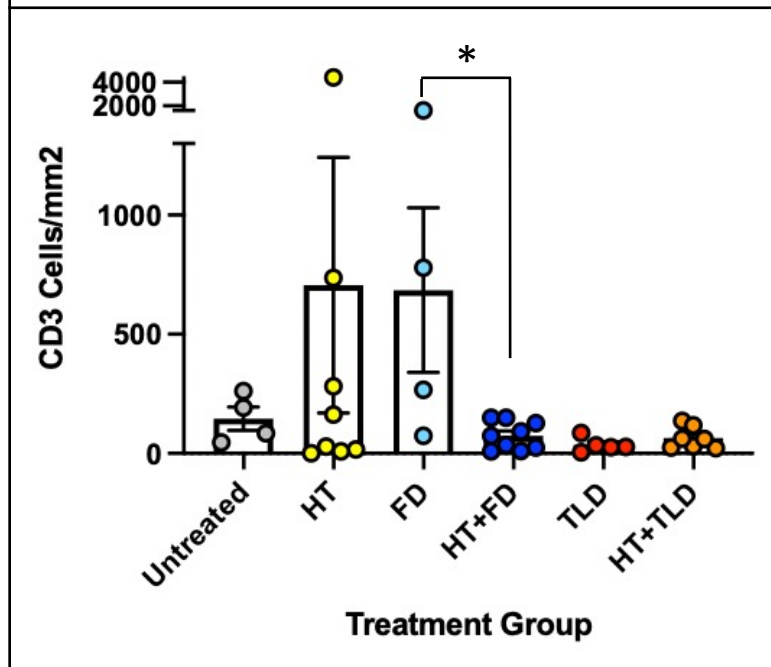
24 Hours Post-Treatment

168 Hours Post-Treatment

CD11b



CD3



B220

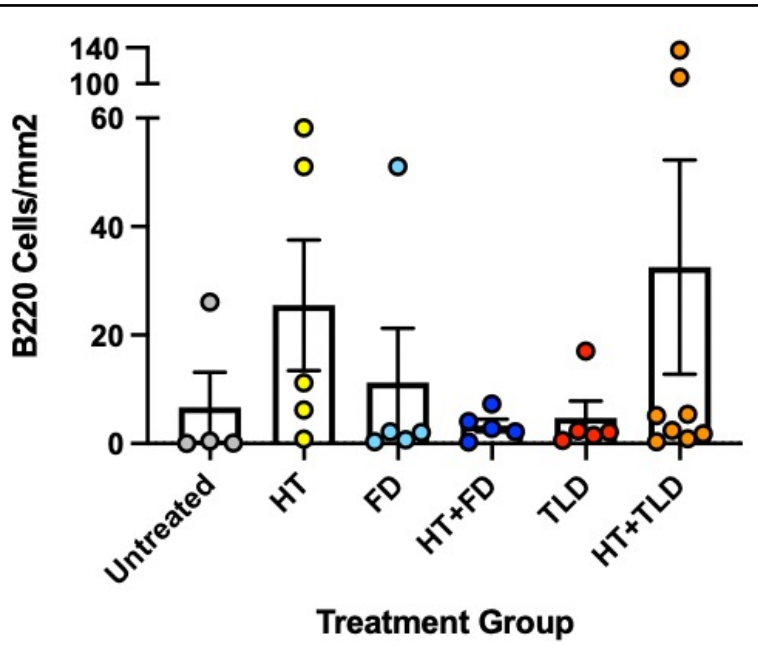
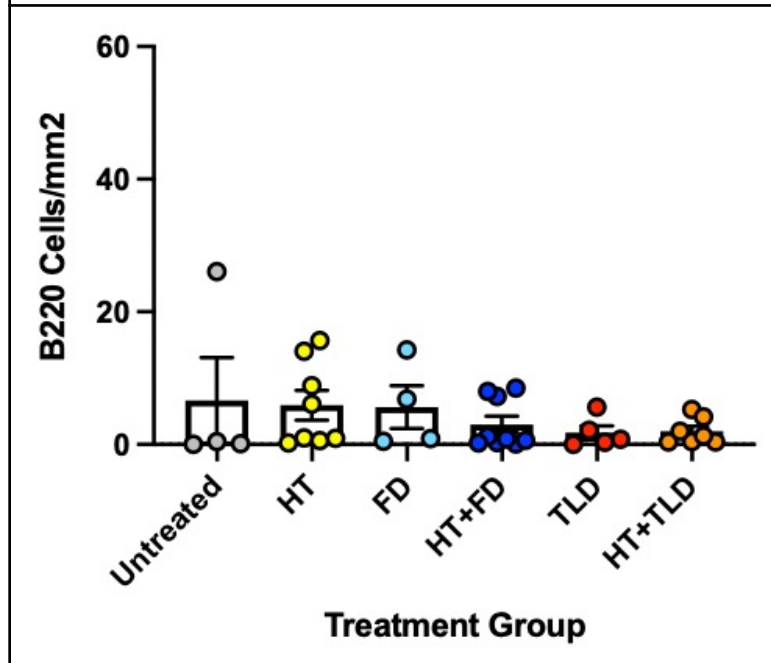


Figure 2. Quantification of CD11b, CD3, and B220 staining of treated tumors (HT-hyperthermia, FD-doxorubicin, TLD-temperature-sensitive liposomal doxorubicin). Scale bars vary between graphs. Error bars: mean ± SEM. Statistics: Mann Whitney tests. CD11b at 24 hours post-treatment: $p=0.0019$. CD3 at 24 hours post treatment: $p=0.034$.