

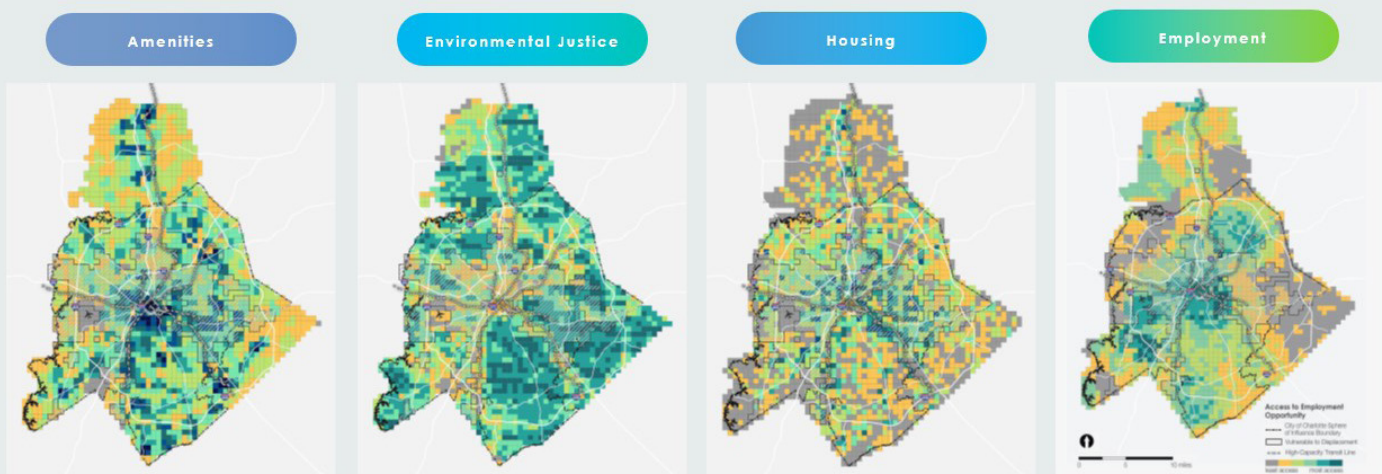
(SAT-A10) Mapping Equity: Illustrations of a Just Future

Session Overview:

How can designers and planners leverage technology to enact social change? Meet with landscape architects and planners who explore how to create equity. Explore which tools can be used to provide balanced services to parks, open space, and green infrastructure for better public health, safety, wellness within our communities.

Learning Outcomes:

1. Discover ways of finding equity within our communities.
2. Cover technologies used to help with equitable planning and design.
3. Discover innovative ways to record data with community members and staff.
4. Discuss case studies that demonstrate how social equity can be achieved.



Speakers:

Andrew Sargeant

Andrew Sargeant, ASLA, is a tech enthusiast looking to pioneer the use of design technology for the field of landscape architecture. He is the first Enterprise Rose Landscape Architectural Fellow currently working with Cleveland Neighborhood Progress. Andrew conducted research on the use of immersive technology in the field of landscape architecture through the 2019 Landscape Architecture (LAF) Fellowship for Innovation and Leadership.



Christine Ma

Christine Ma is an Account Executive for Smart Cities at Esri, helping planners from cities, counties, and regional governments leverage GIS-enabled Smart City solutions in planning workflows. Christine joined Esri in 2015 and now leads a team responsible for promoting Esri Smart City solutions within the western United States and the Asia Pacific region.



Matthew Wilkins

Matt Wilkins is a licensed landscape architect and leads KTUA's California Central Coast office. Matt has worked in interdisciplinary groups throughout his career and brings valuable knowledge of planning, design, construction, and digital technology to his colleagues. He has lead the discussion on practical use of technology within the practice and has co-chaired the Digital Technology PPN for ASLA.

