



# 2027 Hotel Image Gallery

# 2027 Hotel Image Gallery

Main Entrance Upper Windows

Main Entrance Revolving Door (SS) or (DS)



*New Orleans, LA*



# 2027 Hotel Image Gallery

Main Lobby Welcome Banner (Co-Branded w/ Academy)



Main Lobby Escalators

There will be two clings, both on the outside of the escalators (SS) (see arrows)

*New Orleans, LA*

# 2027 Hotel Image Gallery



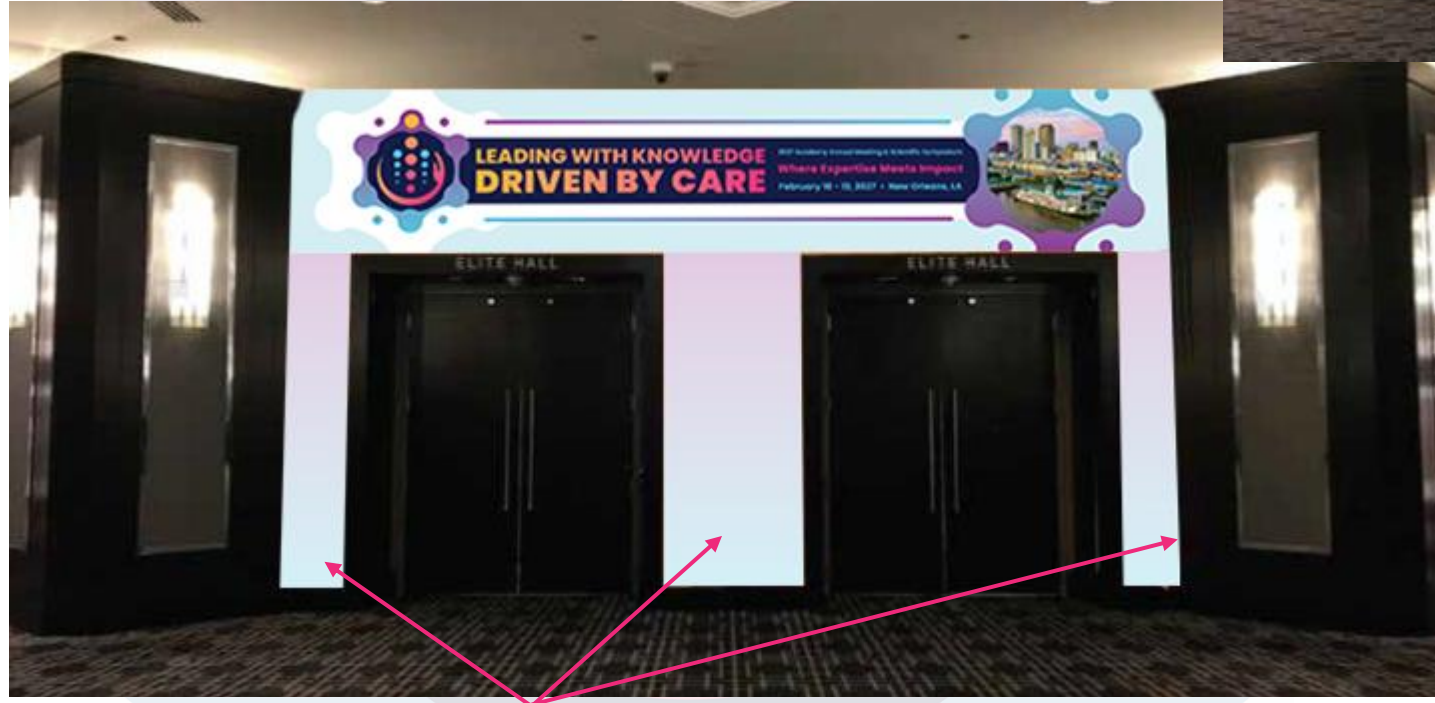
Elevator Window Graphics Top

Elevator Window Graphics Bottom

Elevator Floor Graphics

# 2027 Hotel Image Gallery

Exhibit Hall Entry Way (Co-Branded w/ Academy)



There is opportunity to brand the outer and inner parts where the doors are.





# 2027 Hotel Image Gallery

Two Story Escalator Cling Climb (60 Clings)



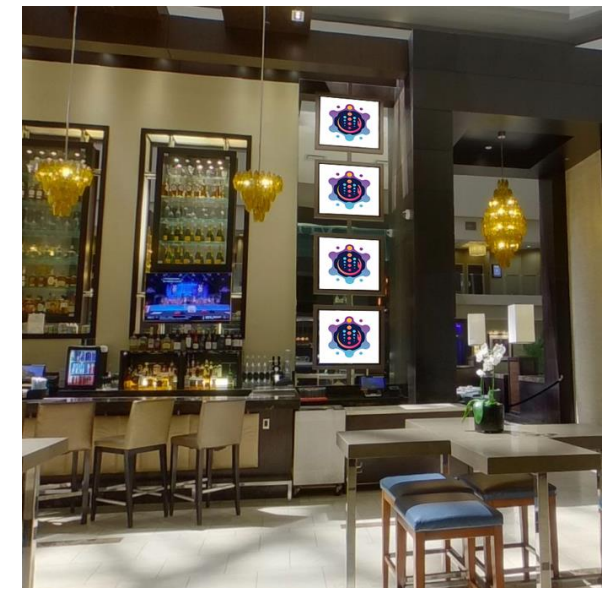
# 2027 Hotel Image Gallery

Back-lit Column Panels



# 2027 Hotel Image Gallery

## Main Bar Mirror Graphics (8 Block)



*New Orleans, LA*



# 2027 Hotel Image Gallery

Back-Lit Wall Graphics (Set of 3 Clings)



# 2027 Hotel Image Gallery

Window Cling Above 8 Block Restaurant/Bar



# 2027 Hotel Image Gallery

Celestine Foyer Column Clings



*New Orleans, LA*



# 2027 Hotel Image Gallery

Celestine Foyer Railing Cling



*New Orleans, LA*



2027 Academy Annual Meeting & Scientific Symposium

# LEADING WITH KNOWLEDGE DRIVEN BY CARE

February 10 – 13, 2027 • New Orleans, LA

**Where Expertise Meets Impact**

For a full listing of 2027  
Sponsorships visit:

**[SPONSORSHIPS 2027](#)**

**Questions:** Contact Kate Feuling at [kfeuling@oandp.org](mailto:kfeuling@oandp.org)